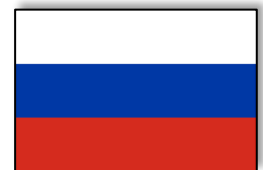




March 2025

Impact Report for Russian Federation



Financial Market Chapter



Imprint Publisher

Authors: VBA Financial Market Chapter Dimitrij Euler and Magdalena Wottke, WifOR Institute Rita Maghularia and Lorenz Röttger. Layout and Format by Mirjeta Rexhaj, Value Balancing Alliance and Katja Wies, WifOR Institute.

Contact Information: Value Balancing Alliance e.V.; Bockenheimer Landstraße 22; 60323 Frankfurt am Main, Germany; Email: info@value-balancing.com; Phone: +49 069 153293610; WifOR Institute; Rheinstraße 22, 64283 Darmstadt, Germany; Email kontakt@wifor.com; Phone +49 615 1501550.

Copyright and Licensing: This report is licensed under the Creative Commons Attribution 4.0 International License (CC BY 4.0).

License Deed: You are free to share and adapt the material for any purpose, even commercially, under the terms of this license. Please attribute appropriately, link to the license, and indicate if changes were made.

Notices: You are not required to comply with the license for elements of the material in the public domain or where an applicable exception or limitation permits your use.

No warranties are given. The license may not grant all permissions necessary for your intended use.

Disclaimer

The Value Balancing Alliance e.V. and WifOR Institute strive to ensure that the information provided in this presentation is as complete and correct as reasonably possible. However, it assumes no responsibility or liability for the completeness, accuracy, or validity of the information provided.

All information, material, and content in this document are provided 'as is', without representation or warranty. The Value Balancing Alliance e.V. and WifOR Institute furthermore assume no responsibility or liability for any third-party content linked to or indirectly referenced.

The Value Balancing Alliance e.V. and WifOR Institute are not liable for direct or indirect damages, including loss of profit, that may arise from or in connection with the information in this presentation. Use of its contents is at your own risk, and the Value Balancing Alliance e.V. and WifOR Institute expressly disclaims liability for any use.

Copyright or trademark laws may apply to all product, company and service names mentioned herein.

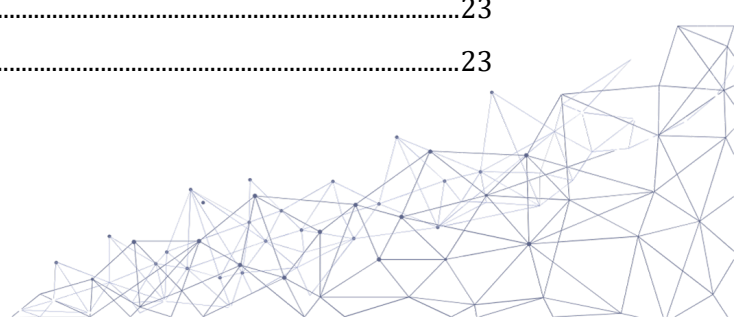
This report does not necessarily reflect the opinions of the individual members of the Working Group.

Date of Publication: 2025. Suggested Citation: VBA et WifOR., Impact Intensity Benchmarks, Impact Report Russian Federation, 2025, www.value-balancing.com



Contents

Introduction.....	1
Responsibility of States	2
Responsibility of Business	2
Interplay	2
Accountability	3
Benchmarks	3
Intensities	3
Sector Intensity Benchmarks.....	4
Agriculture, Forestry and Fishing (A)	4
Mining and Quarrying (B)	5
Manufacturing (C)	6
Electricity, Gas, Steam and Air Conditioning Supply (D).....	7
Water Supply; Sewerage, Waste Management and Remediation Activities (E).....	8
Construction (F)	9
Wholesale and Retail Trade; Repair of Motor Vehicles and Motorcycles (G).....	10
Transportation and Storage (H)	11
Accommodation and Food Service Activities (I).....	12
Information and Communication (J).....	13
Financial and Insurance Activities (K).....	14
Real Estate Activities (L).....	15
Professional, Scientific and Technical Activities (M)	16
Administrative and Support Service Activities (N)	17
Public Administration and Defense; Compulsory Social Security (O)	18
Education (P).....	19
Human Health and Social Work Activities (Q).....	20
Arts, Entertainment and Recreation and Other Services and Activities (R&S).....	21
Overview	22
Environmental Impact RUS	22
Total.....	22
direct	23
upstream tier 1	23



upstream tier 2	24
upstream rest	24
Social Impact RUS	25
Total.....	25
direct	26
upstream tier 1	26
upstream tier 2	27
upstream rest	27
Application	29
Caveats	31
Data Accuracy.....	31
Impact Valuation.....	31
Double Counting.....	32
Economic Impact.....	32
Netting Impacts	32

Introduction

Understanding the societal impact of public policy on economic sectors is vital for fostering growth while achieving transition to a sustainable economy and other policy goals. To this end, this report offers key insights into the performance of specific sectors.

This document presents impact statements for the Russian Federation’s NACE sectors.¹ The tables show the *direct impact* of companies’ own operations as well as the *upstream impact* along their supply chains.² Positive or negative impact values are quantified in monetary terms and divided by each sector’s macroeconomic output. These ‘*Impact Intensities*’ (expressed in EUR of impact per EUR of output) enable comparability across countries, sectors, and companies. The output part of the formula is based on a macroeconomic assessment and reflects overall sector turnover volume.

Impact Intensities are provided for each impact driver across four stages of a production value chain: own operations, upstream tier 1, upstream tier 2, and upstream tiers 3 to n.³ Results are shown for specific countries — Australia, Brazil, Canada, China, France, Germany, India, Indonesia, Italy, Japan, Mexico, Russia, Saudi Arabia, South Korea, Spain, Switzerland, Türkiye, the UK, and the USA — as well as a global average.

The tables provide a foundation for ‘Type 4’ sector-based benchmarks;⁴ companies can compare their reported or estimated impact with the table values. To ensure consistency, a company’s impact must be monetized using the same value factor and scaled relative to revenue. In this way, company-specific Impact Intensity can be compared within the sector and across multiple sectors.

The comparison spans value chain stages within a company’s control (own operations) and beyond (upstream). Impact Intensities are depicted for each upstream stage in the global supply chain, viewed from the perspective of the respective country. These stages are presented in tiers, enabling comparison with a company’s global upstream supply chain. Note that these upstream impacts may not necessarily be located in the same country.

The values are modeled using input-output modeling, as outlined in the System of National Accounts.⁵ WifOR compiles the hybrid multi-regional model based on WIOD, EORA, and

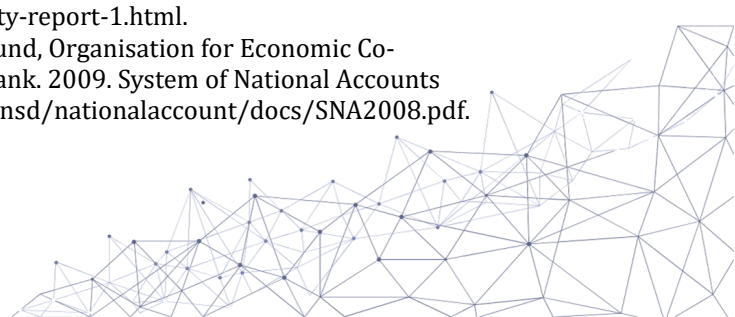
¹ Eurostat, NACE Rev. 2. Statistical classification of economic activities in the European Community, <https://ec.europa.eu/eurostat/documents/3859598/5902521/KS-RA-07-015-EN.pdf>.

² VBA, VBA Impact Statement, 11.2024, https://www.value-balancing.com/_Resources/Persistent/6/b/e/c/6bec726b5e28d5f75e2e5f153db845a3bbb93f2e/VBA_Impact%20Statement_Final.pdf.

³ Tiers represent different levels of suppliers in the supply chain, where ‘tier 1’ refers to direct suppliers, ‘tier 2’ to the suppliers of those direct suppliers, and ‘tier 3 to n’ to all subsequent levels.

⁴ VBA et al., Valuing Impact Materiality 2025, 2025, <https://www.value-balancing.com/en/publications/valuing-impact-materiality-report-1.html>.

⁵ European Commission, International Monetary Fund, Organisation for Economic Co-operation and Development, United Nations, and World Bank. 2009. System of National Accounts 2008. New York: United Nations. <https://unstats.un.org/unsd/nationalaccount/docs/SNA2008.pdf>.



EXIOBASE,⁶ enhanced by estimates based on *satellite accounts*, as outlined in the System of Environmental-Economic Accounting.⁷ The modeled effects are then multiplied by publicly available context-specific value factors⁸ to capture their societal impact.⁹

The tables are complemented by bar charts showing each impact driver's effect (in EUR per EUR output) in all the four value chain stages.

Responsibility of States

States have a primary duty to protect human rights and fundamental rights under international law, in accordance with the primacy principle. This obligation extends to preventing human rights abuses by third parties (including businesses) within their jurisdiction. This duty is grounded in legal obligations and reinforced by policy rationales that ensure consistency in enforcement.

Responsibility of Business

Businesses, by contrast, have a responsibility (rather than a duty) to respect human rights. Their role is supportive of state obligations but remains distinct. While international law has yet to fully define the extent of corporate human rights responsibilities, the UNGPs establish that businesses, at minimum, must prevent and address human rights harms linked to their operations. Beyond compliance with legal obligations, involvement in adverse human rights impacts must be prevented or remedied. Human rights due diligence is required for this purpose; this due diligence process includes assessing risks, integrating findings into corporate decision-making, and mitigating or remedying any adverse impacts.

Interplay

The interplay between *state obligations* and *business responsibilities* reflects a layered system of accountability: While states bear legal obligations to regulate corporate behavior, businesses have a practical responsibility to prevent harm. These responsibilities arise in different forms—whether they cause, contribute to, or are linked to human rights abuses. The nature of corporate involvement in human rights impacts determines their level of responsibility, with leverage and mitigation playing a critical role in addressing violations. Thus, while business responsibilities complement state obligations, they remain distinct and non-parallel, ensuring a balanced but clear accountability framework.

⁶ Scholz, Richard; Dorndorf, Tabea; Tesch, Jasmin; Köster, Robert; Croner, Daniel; Kalamov, Zarko; Setzer, Jana. 2025. Impact measurement using WifOR's sustainability footprint method. Methodological report. Version February 2025. WifOR Institute.

⁷ United Nations, ed. 2014. *System of Environmental-Economic Accounting 2012: Central Framework*. New York, NY: United Nations.

⁸ WifOR, Value Factors, <https://www.wifor.com/en/value-factors/#:~:text=Value%20factors%20convert%20physical%20units,dimensions%20and%20with%20financial%20indicators>

⁹ Scholz, Richard; Albu, Nora; Croner, Daniel; Kalamov, Zarko; Mai, Lukas; Forin, Silvia; Tesch, Jasmin; Dorndorf, Tabea; Setzer, Jana. 2025. WifOR Impact Valuation. Methodological Report. Version February 2025. WifOR Institute.

Accountability

While global businesses in the main complement state efforts and uphold responsible practices, international law establishes the primacy of state responsibility. States must create robust legal frameworks to hold businesses accountable, while companies must conduct human rights due diligence to prevent, mitigate, and remediate adverse impacts. Together, these obligations form a layered system, where corporate responsibility reinforces (rather than replaces) state duties to address human rights risks. Impact accounting helps states and businesses alike understand their respective responsibilities in the context of human rights and broader social, environmental, and economic impacts. While companies must assess their roles within supply chains and address potential harms, it is the states that bear the primary responsibility to tackle these issues and implement policies that prevent extensive negative impacts. Regulatory frameworks should go beyond preventing harm. They should empower businesses to generate positive impacts throughout the value chain. Neither states nor businesses may evade their responsibilities. States cannot plead powerlessness given that international treaties and criminal law extend their reach beyond national boundaries. By the same token, businesses cannot excuse harmful actions by pointing to weak state enforcement of human rights protections.

Benchmarks

This document explores the impacts of Russia's economy, focusing on direct and upstream supply chain impacts on the economic, environmental, and social domains. The analysis is based on the NACE classification of economic activities. Positive and negative impact values are quantified in monetary terms per unit of macroeconomic output (hereinafter "*Impact Intensities*"). The tables display these Impact Intensities in EUR per EUR output for each impact driver across five stages of the sector's value chain: own operations, upstream tier 1, upstream tier 2, and upstream tier 3 to n. The output data is derived from a macroeconomic assessment and reflects the turnover of each sector.

Intensities

The tables help identify the domestic economic sectors with the largest impacts across the country-specific value chain serving the Russian economy. By providing maximum transparency on where significant impacts occur throughout the value chain stages, our analysis enables policymakers and regulators to more effectively manage the impacts. It supports the crafting of regulatory frameworks to mitigate negative and enhance positive impacts.

Sector Intensity Benchmarks

Agriculture, Forestry and Fishing (A)

Variable	direct	upstream tier 1	upstream tier 2	upstream rest	Total
Air Emission	-0.25	-0.04	-0.01	-0.01	-0.31
Fair Wages	-0.63	-0.16	-0.05	-0.05	-0.9
GHG	-0.13	-0.04	-0.02	-0.03	-0.22
GVA	0.45	0.22	0.12	0.14	0.93
Human Rights	-0.14	-0.03	-0.01	-0.01	-0.18
Invasive Species	-0.0	-0.0	-0.0	-0.0	-0.0
Land Use	-0.06	-0.01	-0.0	-0.01	-0.08
Occupational Health & Safety	-0.27	-0.07	-0.03	-0.02	-0.39
Ocean Plastic	0.0	-0.0	-0.0	-0.0	-0.0
Training	0.0	0.0	0.0	0.0	0.01
Waste	-0.02	-0.0	-0.0	-0.0	-0.03
Water	-0.16	-0.07	-0.03	-0.02	-0.28

Source: WifOR / VBA, Table for Russian Federation - Agriculture, forestry and fishing (NACE Code A), 2024, Calculated based on WifOR Institute, WifOR Value Factors, Version February 2025.

The impact intensity table for the Agriculture, Forestry, and Fishing sector in the Russian Federation shows significant negative values across various impact categories, indicating a detrimental effect on the environment and society. The highest negative impact intensity is observed in the Fair Wages category, suggesting substantial issues related to labor compensation, while the Air Emission and Occupational Health & Safety categories also reflect considerable adverse impacts. In contrast, categories such as Training and Ocean Plastic show minimal negative impacts, highlighting areas where the sector may have less detrimental effects or potential for improvement.

Mining and Quarrying (B)

Variable	direct	upstream tier 1	upstream tier 2	upstream rest	Total
Air Emission	-0.03	-0.01	-0.0	-0.01	-0.06
Fair Wages	0.02	-0.0	-0.01	-0.03	-0.02
GHG	-0.11	-0.05	-0.02	-0.02	-0.19
GVA	0.65	0.14	0.08	0.09	0.96
Human Rights	-0.01	-0.0	-0.0	-0.0	-0.02
Invasive Species	-0.0	-0.0	-0.0	-0.0	-0.0
Land Use	-0.0	-0.0	-0.0	-0.0	-0.0
Occupational Health & Safety	-0.02	-0.03	-0.01	-0.01	-0.08
Ocean Plastic	0.0	-0.0	-0.0	-0.0	-0.0
Training	0.01	0.0	0.0	0.0	0.02
Waste	-0.02	-0.0	-0.0	-0.0	-0.03
Water	-0.0	-0.0	-0.0	-0.01	-0.01

Source: WifOR / VBA, Table for Russian Federation - Mining and quarrying (NACE Code B), 2024, Calculated based on WifOR Institute, WifOR Value Factors, Version February 2025.

The impact intensity table for the Mining and Quarrying sector in the Russian Federation reveals a mix of negative and positive impacts, with significant negative values in categories such as GHG emissions and Occupational Health & Safety, indicating serious environmental and health concerns. The Fair Wages category shows a slight positive impact, suggesting that labor compensation issues may not be as severe compared to other sectors, although it still reflects a negative total impact. Additionally, the Training category presents a positive impact intensity, indicating potential for skill development and improvement within the sector, contrasting with the overall negative trends observed in other impact categories.

Manufacturing (C)

Variable	direct	upstream tier 1	upstream tier 2	upstream rest	Total
Air Emission	-0.02	-0.03	-0.01	-0.02	-0.08
Fair Wages	-0.11	-0.07	-0.04	-0.07	-0.28
GHG	-0.07	-0.07	-0.03	-0.04	-0.21
GVA	0.28	0.28	0.15	0.19	0.9
Human Rights	-0.02	-0.01	-0.01	-0.01	-0.05
Invasive Species	-0.0	-0.0	-0.0	-0.0	-0.0
Land Use	-0.0	-0.0	-0.0	-0.0	-0.01
Occupational Health & Safety	-0.11	-0.06	-0.03	-0.03	-0.22
Ocean Plastic	-0.01	-0.0	-0.0	-0.0	-0.01
Training	0.0	0.0	0.0	0.0	0.01
Waste	-0.0	-0.0	-0.0	-0.0	-0.01
Water	-0.01	-0.02	-0.01	-0.02	-0.05

Source: WifOR / VBA, Table for Russian Federation - Manufacturing (NACE Code C), 2024, Calculated based on WifOR Institute, WifOR Value Factors, Version February 2025.

The impact intensity table for the Manufacturing sector in the Russian Federation indicates substantial negative impacts across various categories, particularly in Fair Wages and Occupational Health & Safety, suggesting significant labor and health-related issues within the sector. The Air Emission and GHG categories also reflect considerable negative values, highlighting environmental concerns associated with manufacturing activities. Conversely, the Training category shows a positive impact intensity, indicating opportunities for workforce development and skill enhancement, which contrasts with the overall negative trends observed in other impact areas.

Electricity, Gas, Steam and Air Conditioning Supply (D)

Variable	direct	upstream tier 1	upstream tier 2	upstream rest	Total
Air Emission	-0.13	-0.02	-0.01	-0.01	-0.18
Fair Wages	0.11	-0.04	-0.02	-0.05	0.0
GHG	-0.51	-0.06	-0.03	-0.03	-0.65
GVA	0.26	0.31	0.16	0.17	0.9
Human Rights	-0.0	-0.01	-0.01	-0.01	-0.03
Invasive Species	-0.0	-0.0	-0.0	-0.0	-0.0
Land Use	-0.0	-0.0	-0.0	-0.0	-0.0
Occupational Health & Safety	-0.02	-0.05	-0.03	-0.03	-0.12
Ocean Plastic	0.0	-0.0	-0.0	-0.0	-0.0
Training	0.0	0.0	0.0	0.0	0.01
Waste	-0.0	-0.0	-0.0	-0.0	-0.01
Water	-0.01	-0.0	-0.0	-0.01	-0.03

Source: WifOR / VBA, Table for Russian Federation - Electricity, gas, steam and air conditioning supply (NACE Code D), 2024, Calculated based on WifOR Institute, WifOR Value Factors, Version February 2025.

The impact intensity table for the Electricity, Gas, Steam, and Air Conditioning Supply sector in the Russian Federation reveals significant negative impacts, particularly in GHG emissions and Air Emissions, indicating serious environmental concerns associated with energy production and supply. While the Fair Wages category shows a slight positive impact, suggesting some level of labor compensation adequacy, it is overshadowed by the overall negative trends in other categories. Additionally, the Training category reflects a positive impact intensity, indicating potential for workforce development, contrasting with the adverse effects observed in environmental and health-related metrics.

Water Supply; Sewerage, Waste Management and Remediation Activities

(E)

Variable	direct	upstream tier 1	upstream tier 2	upstream rest	Total
Air Emission	-0.13	-0.02	-0.01	-0.01	-0.18
Fair Wages	0.11	-0.04	-0.02	-0.05	0.0
GHG	-0.51	-0.06	-0.03	-0.03	-0.65
GVA	0.26	0.31	0.16	0.17	0.9
Human Rights	-0.0	-0.01	-0.01	-0.01	-0.03
Invasive Species	-0.0	-0.0	-0.0	-0.0	-0.0
Land Use	-0.0	-0.0	-0.0	-0.0	-0.0
Occupational Health & Safety	-0.02	-0.05	-0.03	-0.03	-0.12
Ocean Plastic	0.0	-0.0	-0.0	-0.0	-0.0
Training	0.0	0.0	0.0	0.0	0.01
Waste	-0.0	-0.0	-0.0	-0.0	-0.01
Water	-0.01	-0.0	-0.0	-0.01	-0.03

Source: WifOR / VBA, Table for Russian Federation - Water supply; sewerage, waste management and remediation activities (NACE Code E), 2024, Calculated based on WifOR Institute, WifOR Value Factors, Version February 2025.

The impact intensity table for the Water Supply; Sewerage; Waste Management and Remediation Activities sector in the Russian Federation indicates significant negative impacts, particularly in GHG emissions and Air Emissions, reflecting serious environmental challenges associated with waste and water management processes. The Fair Wages category shows a slight positive impact, suggesting some level of labor compensation adequacy, although this is minimal compared to the overall negative trends in environmental impacts. Additionally, the Training category presents a positive impact intensity, indicating potential for workforce development and skill enhancement, which contrasts with the adverse effects observed in other impact areas related to health and environmental sustainability.

Construction (F)

Variable	direct	upstream tier 1	upstream tier 2	upstream rest	Total
Air Emission	-0.0	-0.02	-0.01	-0.01	-0.04
Fair Wages	-0.83	-0.11	-0.03	-0.06	-1.03
GHG	-0.01	-0.06	-0.03	-0.03	-0.13
GVA	0.43	0.21	0.13	0.16	0.94
Human Rights	-0.06	-0.01	-0.01	-0.01	-0.09
Invasive Species	-0.0	-0.0	-0.0	-0.0	-0.0
Land Use	-0.0	-0.0	-0.0	-0.0	-0.01
Occupational Health & Safety	-0.07	-0.07	-0.03	-0.03	-0.19
Ocean Plastic	0.0	-0.01	-0.0	-0.0	-0.01
Training	0.01	0.0	0.0	0.0	0.01
Waste	-0.0	-0.0	-0.0	-0.0	-0.0
Water	-0.0	-0.0	-0.0	-0.01	-0.02

Source: WifOR / VBA, Table for Russian Federation - Construction (NACE Code F), 2024, Calculated based on WifOR Institute, WifOR Value Factors, Version February 2025.

The impact intensity table for the Construction sector in the Russian Federation reveals substantial negative impacts, particularly in the Fair Wages category, which indicates severe labor compensation issues and a total negative impact that significantly overshadows other categories. Environmental impacts are also notable, with Air Emissions and GHG emissions reflecting considerable negative values, suggesting that construction activities contribute significantly to pollution and greenhouse gas emissions. In contrast, the Training category shows a positive impact intensity, indicating opportunities for skill development and workforce enhancement, which stands out against the backdrop of negative impacts in labor and environmental metrics.

Wholesale and Retail Trade; Repair of Motor Vehicles and Motorcycles (G)

Variable	direct	upstream tier 1	upstream tier 2	upstream rest	Total
Air Emission	-0.0	-0.01	-0.01	-0.01	-0.02
Fair Wages	-0.1	-0.01	-0.01	-0.03	-0.15
GHG	-0.0	-0.03	-0.02	-0.02	-0.06
GVA	0.61	0.18	0.08	0.09	0.97
Human Rights	-0.03	-0.01	-0.0	-0.0	-0.05
Invasive Species	-0.0	-0.0	-0.0	-0.0	-0.0
Land Use	-0.0	-0.0	-0.0	-0.0	-0.0
Occupational Health & Safety	-0.08	-0.03	-0.01	-0.02	-0.15
Ocean Plastic	0.0	-0.0	-0.0	-0.0	-0.0
Training	0.0	0.0	0.0	0.0	0.01
Waste	-0.0	-0.0	-0.0	-0.0	-0.0
Water	-0.0	-0.0	-0.0	-0.01	-0.01

Source: WifOR / VBA, Table for Russian Federation - Wholesale and retail trade; repair of motor vehicles and motorcycles (NACE Code G), 2024, Calculated based on WifOR Institute, WifOR Value Factors, Version February 2025.

The impact intensity table for the Wholesale and Retail Trade; Repair of Motor Vehicles and Motorcycles sector in the Russian Federation indicates notable negative impacts, particularly in the Fair Wages and Occupational Health & Safety categories, highlighting significant labor-related issues within the sector. Environmental impacts are also present, with Air Emissions and GHG emissions reflecting negative values, suggesting that the sector contributes to pollution, albeit to a lesser extent compared to more industrial sectors. Conversely, the Training category shows a positive impact intensity, indicating potential for workforce development and skill enhancement, which contrasts with the overall negative trends observed in labor and environmental metrics.

Transportation and Storage (H)

Variable	direct	upstream tier 1	upstream tier 2	upstream rest	Total
Air Emission	-0.04	-0.01	-0.01	-0.01	-0.07
Fair Wages	-0.41	-0.04	-0.03	-0.05	-0.52
GHG	-0.15	-0.05	-0.03	-0.03	-0.25
GVA	0.46	0.2	0.13	0.15	0.93
Human Rights	-0.02	-0.01	-0.0	-0.01	-0.04
Invasive Species	-0.0	-0.0	-0.0	-0.0	-0.0
Land Use	-0.0	-0.0	-0.0	-0.0	-0.0
Occupational Health & Safety	-0.09	-0.04	-0.02	-0.02	-0.18
Ocean Plastic	0.0	-0.0	-0.0	-0.0	-0.0
Training	0.01	0.0	0.0	0.0	0.01
Waste	-0.0	-0.0	-0.0	-0.0	-0.0
Water	-0.0	-0.0	-0.0	-0.01	-0.02

Source: WifOR / VBA, Table for Russian Federation - Transportation and storage (NACE Code H), 2024, Calculated based on WifOR Institute, WifOR Value Factors, Version February 2025.

The impact intensity table for the Transportation and Storage sector in the Russian Federation reveals significant negative impacts, particularly in the Fair Wages and Occupational Health & Safety categories, indicating serious labor-related issues and health risks for workers in this sector. Environmental impacts are also notable, with both Air Emissions and GHG emissions reflecting considerable negative values, suggesting that transportation activities contribute significantly to pollution and greenhouse gas emissions. In contrast, the Training category shows a positive impact intensity, indicating opportunities for workforce development and skill enhancement, which stands out against the backdrop of negative impacts in labor and environmental metrics.

Accommodation and Food Service Activities (I)

Variable	direct	upstream tier 1	upstream tier 2	upstream rest	Total
Air Emission	-0.0	-0.03	-0.01	-0.01	-0.06
Fair Wages	-1.86	-0.19	-0.05	-0.06	-2.16
GHG	-0.01	-0.06	-0.02	-0.02	-0.11
GVA	0.49	0.2	0.11	0.13	0.92
Human Rights	-0.13	-0.01	-0.01	-0.01	-0.16
Invasive Species	-0.0	-0.0	-0.0	-0.0	-0.0
Land Use	-0.0	-0.0	-0.01	-0.0	-0.01
Occupational Health & Safety	-0.26	-0.06	-0.03	-0.02	-0.37
Ocean Plastic	0.0	-0.0	-0.0	-0.0	-0.0
Training	0.01	0.0	0.0	0.0	0.01
Waste	-0.0	-0.0	-0.0	-0.0	-0.01
Water	-0.0	-0.01	-0.02	-0.02	-0.04

Source: WifOR / VBA, Table for Russian Federation - Accommodation and food service activities (NACE Code I), 2024, Calculated based on WifOR Institute, WifOR Value Factors, Version February 2025.

The impact intensity table for the Accommodation and Food Service Activities sector in the Russian Federation shows extremely high negative values in the Fair Wages category, indicating severe labor compensation issues that significantly affect the overall impact of the sector. Environmental impacts are also present, with notable negative values in Air Emissions and GHG emissions, suggesting that this sector contributes to pollution, albeit at lower intensities compared to more industrial sectors. Conversely, the Training category reflects a positive impact intensity, indicating potential for workforce development and skill enhancement, which contrasts with the overall negative trends observed in labor and environmental metrics.

Information and Communication (J)

Variable	direct	upstream tier 1	upstream tier 2	upstream rest	Total
Air Emission	-0.0	-0.01	-0.01	-0.01	-0.02
Fair Wages	0.11	-0.01	-0.01	-0.03	0.06
GHG	-0.01	-0.03	-0.02	-0.02	-0.07
GVA	0.56	0.22	0.09	0.09	0.96
Human Rights	-0.01	-0.01	-0.0	-0.0	-0.03
Invasive Species	-0.0	-0.0	-0.0	-0.0	-0.0
Land Use	0.0	-0.0	-0.0	-0.0	-0.0
Occupational Health & Safety	-0.04	-0.03	-0.01	-0.02	-0.1
Ocean Plastic	0.0	-0.0	-0.0	-0.0	-0.0
Training	0.01	0.0	0.0	0.0	0.02
Waste	-0.0	-0.0	-0.0	-0.0	-0.0
Water	0.0	-0.0	-0.0	-0.0	-0.01

Source: WifOR / VBA, Table for Russian Federation - Information and communication (NACE Code J), 2024, Calculated based on WifOR Institute, WifOR Value Factors, Version February 2025.

The impact intensity table for the Information and Communication sector in the Russian Federation indicates relatively low negative impacts in environmental categories such as Air Emissions and GHG emissions, suggesting that this sector has a lesser environmental footprint compared to more industrial sectors. The Fair Wages category shows a slight positive impact, indicating that labor compensation issues may not be as severe, which is a positive aspect in terms of workforce conditions. However, the Occupational Health & Safety category reflects a notable negative impact, highlighting potential health risks for workers in this sector, which contrasts with the overall positive trends in labor compensation and lower environmental impacts.

Financial and Insurance Activities (K)

Variable	direct	upstream tier 1	upstream tier 2	upstream rest	Total
Air Emission	-0.0	-0.01	-0.0	-0.01	-0.02
Fair Wages	0.25	-0.02	-0.02	-0.03	0.18
GHG	-0.0	-0.02	-0.01	-0.01	-0.05
GVA	0.68	0.15	0.07	0.07	0.97
Human Rights	0.0	-0.01	-0.0	-0.0	-0.01
Invasive Species	-0.0	-0.0	-0.0	-0.0	-0.0
Land Use	0.0	-0.0	-0.0	-0.0	-0.0
Occupational Health & Safety	-0.02	-0.03	-0.01	-0.01	-0.08
Ocean Plastic	0.0	-0.0	-0.0	-0.0	-0.0
Training	0.01	0.0	0.0	0.0	0.02
Waste	-0.0	-0.0	-0.0	-0.0	-0.0
Water	0.0	-0.0	-0.0	-0.01	-0.02

Source: WifOR / VBA, Table for Russian Federation - Financial and insurance activities (NACE Code K), 2024, Calculated based on WifOR Institute, WifOR Value Factors, Version February 2025.

The impact intensity table for the Financial and Insurance Activities sector in the Russian Federation shows minimal negative environmental impacts, particularly in Air Emissions and GHG emissions, indicating that this sector has a relatively low ecological footprint compared to more industrial sectors. The Fair Wages category reflects a positive impact, suggesting that labor compensation is relatively adequate, which is a favorable aspect for workforce conditions. However, the Occupational Health & Safety category indicates a negative impact, highlighting potential health risks for employees in this sector, which contrasts with the overall positive trends in labor compensation and low environmental impacts.

Real Estate Activities (L)

Variable	direct	upstream tier 1	upstream tier 2	upstream rest	Total
Air Emission	-0.0	-0.01	-0.0	-0.01	-0.02
Fair Wages	0.33	-0.03	-0.02	-0.03	0.26
GHG	-0.01	-0.05	-0.02	-0.02	-0.09
GVA	0.68	0.12	0.07	0.08	0.96
Human Rights	0.0	-0.01	-0.0	-0.0	-0.01
Invasive Species	-0.0	-0.0	-0.0	-0.0	-0.0
Land Use	-0.0	-0.0	-0.0	-0.0	-0.0
Occupational Health & Safety	-0.02	-0.02	-0.01	-0.01	-0.07
Ocean Plastic	0.0	-0.0	-0.0	-0.0	-0.0
Training	0.01	0.0	0.0	0.0	0.01
Waste	-0.0	-0.0	-0.0	-0.0	-0.0
Water	-0.0	-0.0	-0.0	-0.01	-0.01

Source: WifOR / VBA, Table for Russian Federation - Real estate activities (NACE Code L), 2024, Calculated based on WifOR Institute, WifOR Value Factors, Version February 2025.

The impact intensity table for the Real Estate Activities sector in the Russian Federation indicates relatively low negative environmental impacts, particularly in Air Emissions and GHG emissions, suggesting that this sector has a minor ecological footprint compared to more industrial sectors. The Fair Wages category shows a positive impact, indicating that labor compensation is relatively adequate, which is a favorable aspect for workforce conditions. However, the Occupational Health & Safety category reflects a negative impact, highlighting potential health risks for employees in this sector, which contrasts with the overall positive trends in labor compensation and low environmental impacts.

Professional, Scientific and Technical Activities (M)

Variable	direct	upstream tier 1	upstream tier 2	upstream rest	Total
Air Emission	-0.0	-0.0	-0.0	-0.01	-0.02
Fair Wages	0.54	0.09	0.01	-0.02	0.62
GHG	-0.0	-0.02	-0.01	-0.02	-0.05
GVA	0.59	0.21	0.09	0.08	0.97
Human Rights	0.0	-0.0	-0.0	-0.0	-0.01
Invasive Species	-0.0	-0.0	-0.0	-0.0	-0.0
Land Use	-0.0	-0.0	-0.0	-0.0	-0.0
Occupational Health & Safety	-0.04	-0.03	-0.01	-0.01	-0.1
Ocean Plastic	0.0	-0.0	-0.0	-0.0	-0.0
Training	0.0	0.0	0.0	0.0	0.01
Waste	-0.0	-0.0	-0.0	-0.0	-0.0
Water	0.0	-0.0	-0.0	-0.0	-0.01

Source: WifOR / VBA, Table for Russian Federation - Professional, scientific and technical activities (NACE Code M), 2024, Calculated based on WifOR Institute, WifOR Value Factors, Version February 2025.

The impact intensity table for the Professional, Scientific and Technical Activities sector in the Russian Federation indicates relatively low negative environmental impacts, particularly in Air Emissions and GHG emissions, suggesting that this sector has a minor ecological footprint compared to more industrial sectors. The Fair Wages category shows a significant positive impact, indicating that labor compensation is relatively adequate, which is a favorable aspect for workforce conditions. However, the Occupational Health & Safety category reflects a notable negative impact, highlighting potential health risks for employees in this sector, contrasting with the overall positive trends in labor compensation and low environmental impacts.

Administrative and Support Service Activities (N)

Variable	direct	upstream tier 1	upstream tier 2	upstream rest	Total
Air Emission	-0.0	-0.0	-0.0	-0.01	-0.02
Fair Wages	0.54	0.09	0.01	-0.02	0.62
GHG	-0.0	-0.02	-0.01	-0.02	-0.05
GVA	0.59	0.21	0.09	0.08	0.97
Human Rights	0.0	-0.0	-0.0	-0.0	-0.01
Invasive Species	-0.0	-0.0	-0.0	-0.0	-0.0
Land Use	-0.0	-0.0	-0.0	-0.0	-0.0
Occupational Health & Safety	-0.04	-0.03	-0.01	-0.01	-0.1
Ocean Plastic	0.0	-0.0	-0.0	-0.0	-0.0
Training	0.0	0.0	0.0	0.0	0.01
Waste	-0.0	-0.0	-0.0	-0.0	-0.0
Water	0.0	-0.0	-0.0	-0.0	-0.01

Source: WifOR / VBA, Table for Russian Federation - Administrative and support service activities (NACE Code N), 2024, Calculated based on WifOR Institute, WifOR Value Factors, Version February 2025.

The impact intensity table for the Administrative and Support Service Activities sector in the Russian Federation indicates low negative environmental impacts, particularly in Air Emissions and GHG emissions, suggesting that this sector has a relatively minor ecological footprint compared to more industrial sectors. The Fair Wages category shows a significant positive impact, indicating that labor compensation is relatively adequate, which is a favorable aspect for workforce conditions. However, the Occupational Health & Safety category reflects a notable negative impact, highlighting potential health risks for employees in this sector, contrasting with the overall positive trends in labor compensation and low environmental impacts.

Public Administration and Defense; Compulsory Social Security (O)

Variable	direct	upstream tier 1	upstream tier 2	upstream rest	Total
Air Emission	-0.0	-0.01	-0.01	-0.01	-0.03
Fair Wages	0.44	-0.09	-0.03	-0.05	0.27
GHG	-0.01	-0.04	-0.02	-0.02	-0.08
GVA	0.5	0.23	0.1	0.12	0.95
Human Rights	0.0	-0.01	-0.0	-0.0	-0.02
Invasive Species	-0.0	-0.0	-0.0	-0.0	-0.0
Land Use	-0.0	-0.0	-0.0	-0.0	-0.01
Occupational Health & Safety	-0.22	-0.05	-0.02	-0.02	-0.31
Ocean Plastic	0.0	-0.0	-0.0	-0.0	-0.0
Training	0.0	0.0	0.0	0.0	0.01
Waste	-0.0	-0.0	-0.0	-0.0	-0.0
Water	-0.0	-0.0	-0.01	-0.01	-0.02

Source: WifOR / VBA, Table for Russian Federation - Public administration and defense; compulsory social security (NACE Code O), 2024, Calculated based on WifOR Institute, WifOR Value Factors, Version February 2025.

The impact intensity table for the Public Administration and Defense; Compulsory Social Security sector in the Russian Federation shows low negative environmental impacts, particularly in Air Emissions and GHG emissions, indicating that this sector has a relatively minor ecological footprint. The Fair Wages category reflects a positive impact, suggesting that labor compensation is generally adequate, which is a favorable aspect for workforce conditions. However, the Occupational Health & Safety category exhibits a significant negative impact, highlighting potential health risks for employees in this sector, contrasting with the overall positive trends in labor compensation and low environmental impacts.

Education (P)

Variable	direct	upstream tier 1	upstream tier 2	upstream rest	Total
Air Emission	-0.01	-0.01	-0.01	-0.01	-0.03
Fair Wages	-0.3	-0.07	-0.02	-0.02	-0.42
GHG	-0.01	-0.03	-0.02	-0.01	-0.07
GVA	0.67	0.16	0.06	0.07	0.97
Human Rights	0.0	-0.01	-0.0	-0.0	-0.02
Invasive Species	-0.0	-0.0	-0.0	-0.0	-0.0
Land Use	-0.0	-0.0	-0.0	-0.0	-0.0
Occupational Health & Safety	-0.54	-0.03	-0.01	-0.01	-0.6
Ocean Plastic	0.0	-0.0	-0.0	-0.0	-0.0
Training	0.0	0.0	0.0	0.0	0.01
Waste	-0.0	-0.0	-0.0	-0.0	-0.0
Water	-0.0	-0.0	-0.01	-0.01	-0.02

Source: WifOR / VBA, Table for Russian Federation - Education (NACE Code P), 2024, Calculated based on WifOR Institute, WifOR Value Factors, Version February 2025.

The impact intensity table for the Education sector in the Russian Federation indicates notable negative impacts, particularly in the Fair Wages and Occupational Health & Safety categories, suggesting significant labor compensation issues and health risks for employees within this sector. Environmental impacts are also present, with Air Emissions and GHG emissions reflecting considerable negative values, indicating that educational institutions contribute to pollution, albeit at lower intensities compared to more industrial sectors. Conversely, the Training category shows a positive impact intensity, indicating potential for skill development and enhancement within the workforce, which contrasts with the overall negative trends observed in labor and environmental metrics.

Human Health and Social Work Activities (Q)

Variable	direct	upstream tier 1	upstream tier 2	upstream rest	Total
Air Emission	-0.0	-0.01	-0.01	-0.01	-0.03
Fair Wages	-1.08	-0.12	-0.03	-0.04	-1.26
GHG	-0.01	-0.03	-0.02	-0.02	-0.08
GVA	0.58	0.19	0.08	0.1	0.95
Human Rights	-0.06	-0.01	-0.0	-0.0	-0.08
Invasive Species	-0.0	-0.0	-0.0	-0.0	-0.0
Land Use	-0.0	-0.0	-0.0	-0.0	-0.0
Occupational Health & Safety	-0.5	-0.05	-0.02	-0.02	-0.58
Ocean Plastic	0.0	-0.0	-0.0	-0.0	-0.0
Training	0.01	0.0	0.0	0.0	0.02
Waste	-0.0	-0.0	-0.0	-0.0	-0.0
Water	-0.0	-0.01	-0.01	-0.01	-0.03

Source: WifOR / VBA, Table for Russian Federation - Human health and social work activities (NACE Code Q), 2024, Calculated based on WifOR Institute, WifOR Value Factors, Version February 2025.

The impact intensity table for the Human Health and Social Work Activities sector in the Russian Federation reveals significant negative impacts, particularly in the Fair Wages and Occupational Health & Safety categories, indicating serious labor compensation issues and health risks for workers in this sector. Environmental impacts are also notable, with Air Emissions and GHG emissions reflecting considerable negative values, suggesting that health and social work activities contribute to pollution, albeit at lower intensities compared to more industrial sectors. Conversely, the Training category shows a positive impact intensity, indicating potential for workforce development and skill enhancement, which contrasts with the overall negative trends observed in labor and environmental metrics.

Arts, Entertainment and Recreation and Other Services and Activities (R&S)

Variable	direct	upstream tier 1	upstream tier 2	upstream rest	Total
Air Emission	-0.01	-0.02	-0.01	-0.01	-0.05
Fair Wages	-1.84	-0.04	-0.02	-0.04	-1.94
GHG	-0.28	-0.07	-0.02	-0.03	-0.4
GVA	0.5	0.19	0.11	0.13	0.93
Human Rights	-0.15	-0.01	-0.0	-0.0	-0.17
Invasive Species	-0.0	-0.0	-0.0	-0.0	-0.0
Land Use	-0.0	-0.0	-0.0	-0.0	-0.0
Occupational Health & Safety	-0.19	-0.03	-0.02	-0.02	-0.26
Ocean Plastic	0.0	-0.0	-0.0	-0.0	-0.0
Training	0.01	0.0	0.0	0.0	0.02
Waste	-0.0	-0.0	-0.0	-0.0	-0.0
Water	0.0	-0.0	-0.0	-0.01	-0.01

Source: WifOR / VBA, Table for Russian Federation - Arts, entertainment and recreation and other services and activities (NACE Code R&S), 2024, Calculated based on WifOR Institute, WifOR Value Factors, Version February 2025.

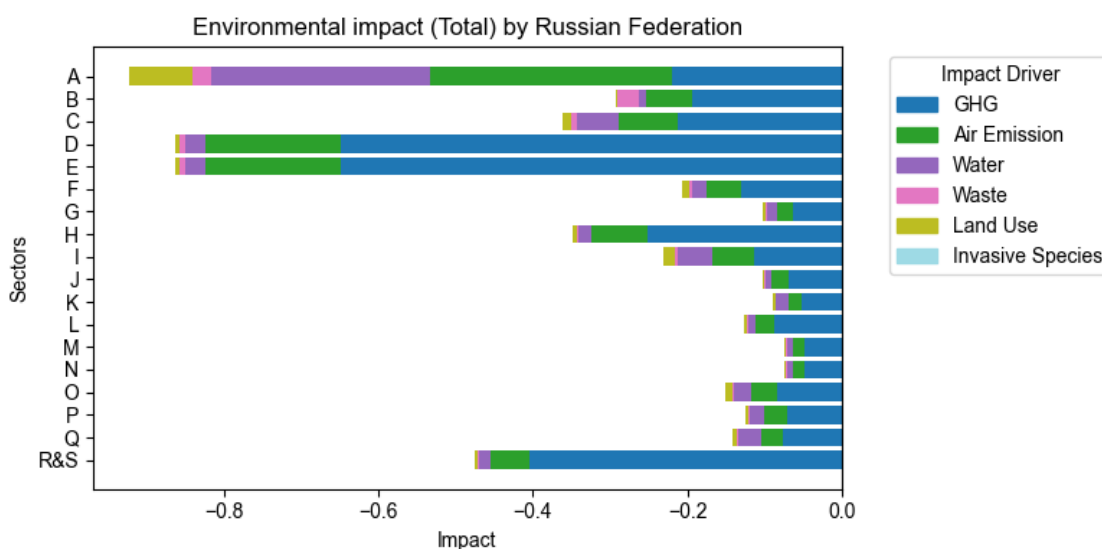
The impact intensity table for the Arts, Entertainment and Recreation; Other Services sector in the Russian Federation indicates significant negative impacts, particularly in the Fair Wages and GHG emissions categories, highlighting severe labor compensation issues and a substantial environmental footprint associated with greenhouse gas emissions. Additionally, the Air Emissions category reflects considerable negative values, suggesting that activities within this sector contribute to pollution, albeit at lower intensities compared to more industrial sectors. Conversely, the Training category shows a positive impact intensity, indicating potential for workforce development and skill enhancement, which contrasts with the overall negative trends observed in labor and environmental metrics.

Overview

The overall assessment of the Russian Federation, utilizing the Value Balancing Alliance and WifOR methodologies, reveals significant challenges across various sectors regarding both environmental and social impacts. Environmental impact intensities indicate that sectors such as Agriculture, Manufacturing, and Construction contribute heavily to air emissions and GHGs, necessitating urgent interventions to mitigate their ecological footprints. Socially, the data highlights severe issues in Fair Wages and Occupational Health & Safety, particularly in sectors like Education and Human Health, suggesting that labor conditions require substantial improvement. Additionally, while some sectors show potential for positive impacts through Training initiatives, the overall negative trends in social metrics indicate a pressing need for reforms to enhance workforce conditions. This comprehensive analysis underscores the importance of adopting a holistic approach to balance economic activities with environmental sustainability and social equity in the Russian Federation.

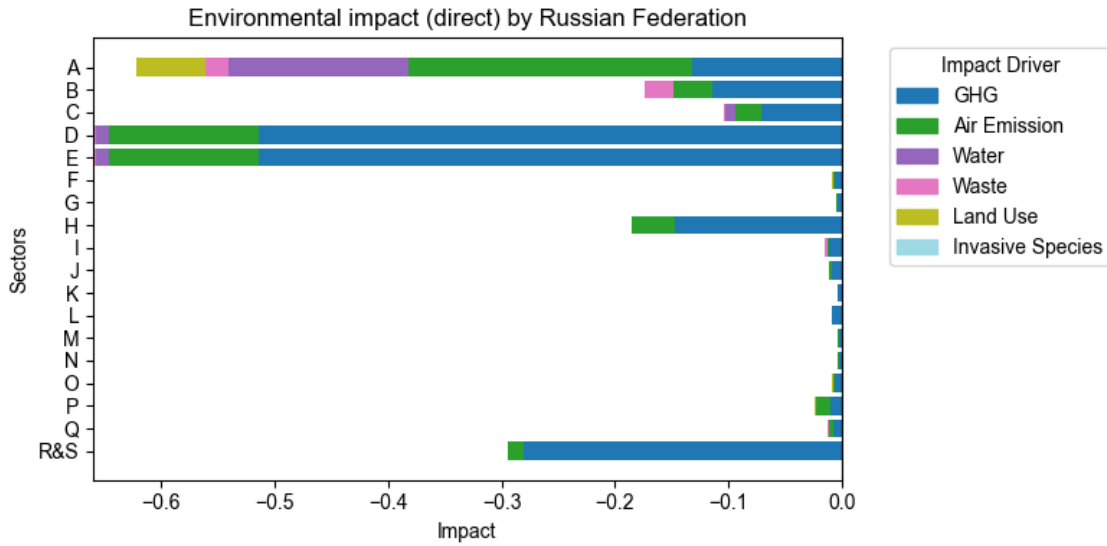
Environmental Impact RUS

Total



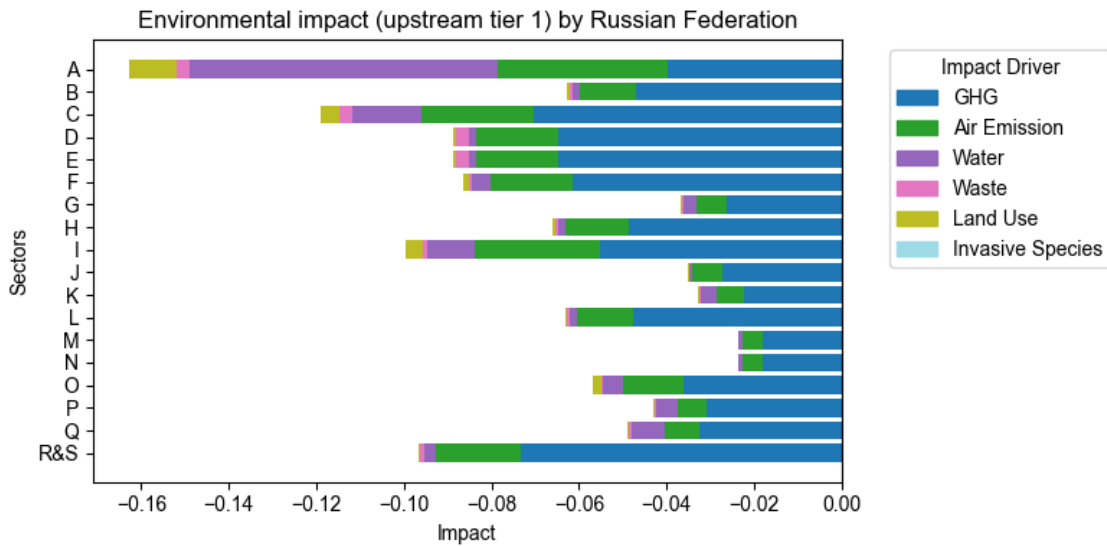
Source: VBA/WifOR, Overview of environmental impact, Total in Russian Federation, 2024, Calculated based on WifOR Institute, WifOR Value Factors, Version February 2025

direct



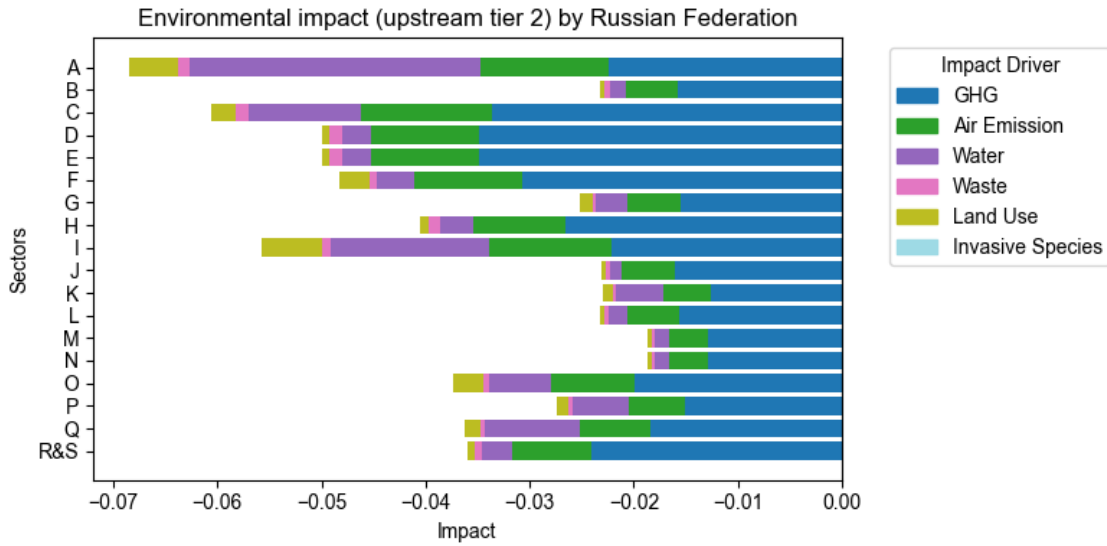
Source: VBA/WifOR, Overview of environmental impact, direct in Russian Federation, 2024, Calculated based on WifOR Institute, WifOR Value Factors, Version February 2025

upstream tier 1



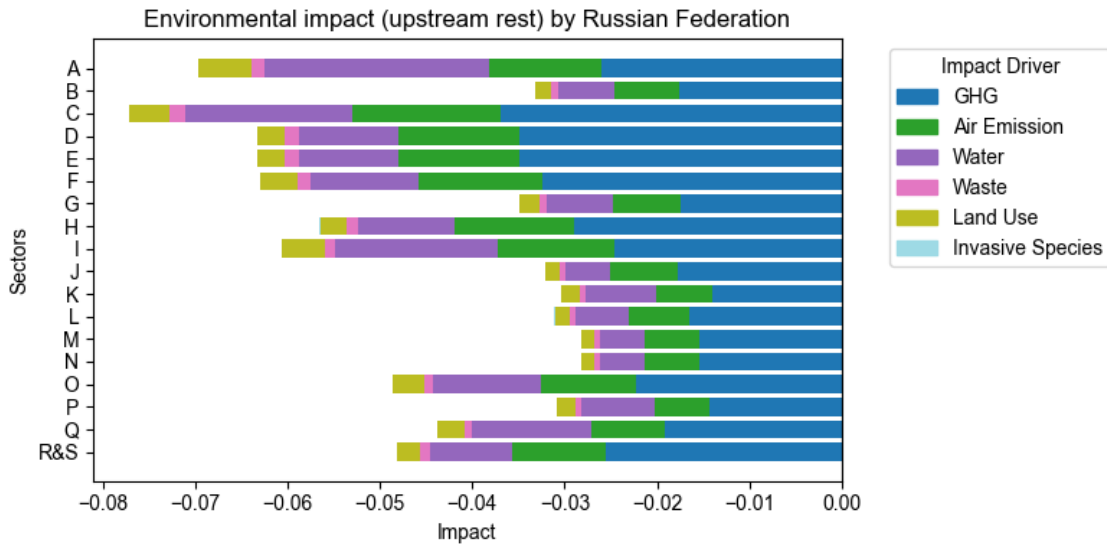
Source: VBA/WifOR, Overview of environmental impact, upstream tier 1 in Russian Federation, 2024, Calculated based on WifOR Institute, WifOR Value Factors, Version February 2025

upstream tier 2



Source: VBA/WifOR, Overview of environmental impact, upstream tier 2 in Russian Federation, 2024, Calculated based on WifOR Institute, WifOR Value Factors, Version February 2025

upstream rest

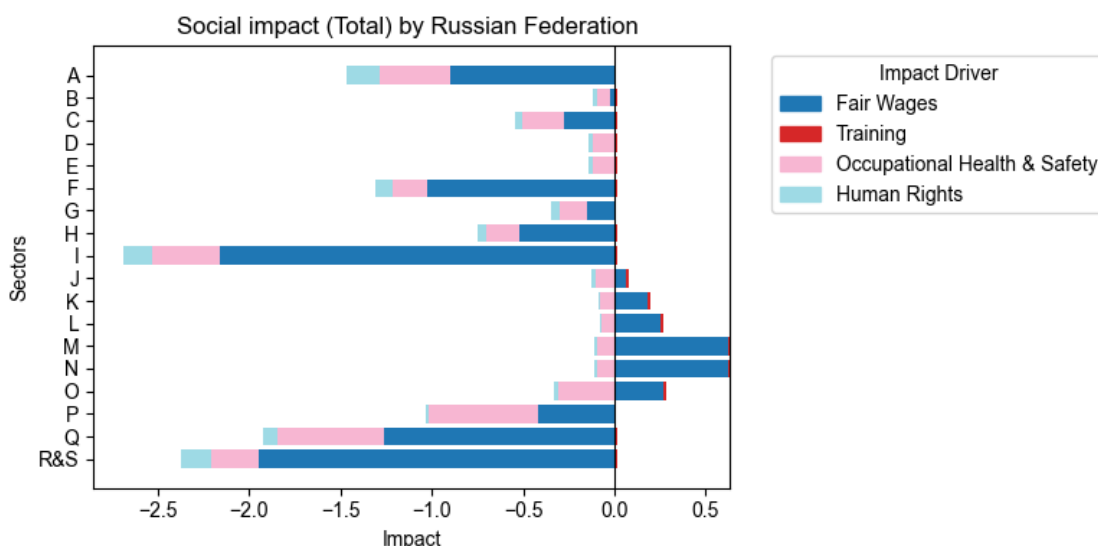


Source: VBA/WifOR, Overview of environmental impact, upstream rest in Russian Federation, 2024, Calculated based on WifOR Institute, WifOR Value Factors, Version February 2025

The environmental impact intensities across various NACE sectors in the Russian Federation reveal significant differences in their contributions to GHG emissions, air emissions, and other environmental factors at different stages of the value chain. Direct impacts tend to be more pronounced in sectors such as Agriculture, Forestry, and Fishing, while upstream impacts, particularly in Tier 1 and Tier 2, show a more distributed negative impact across sectors like Manufacturing and Construction. The upstream stages often exhibit lower intensities for air emissions and GHGs compared to direct impacts, indicating that while production processes are significant, the supply chain also contributes notably to environmental degradation. Additionally, sectors like Arts, Entertainment, and Recreation show relatively lower environmental impacts across all stages, suggesting a lesser ecological footprint. Overall, the data highlights the complexity of environmental impacts across different sectors and stages, emphasizing the need for targeted interventions in both direct operations and upstream activities.

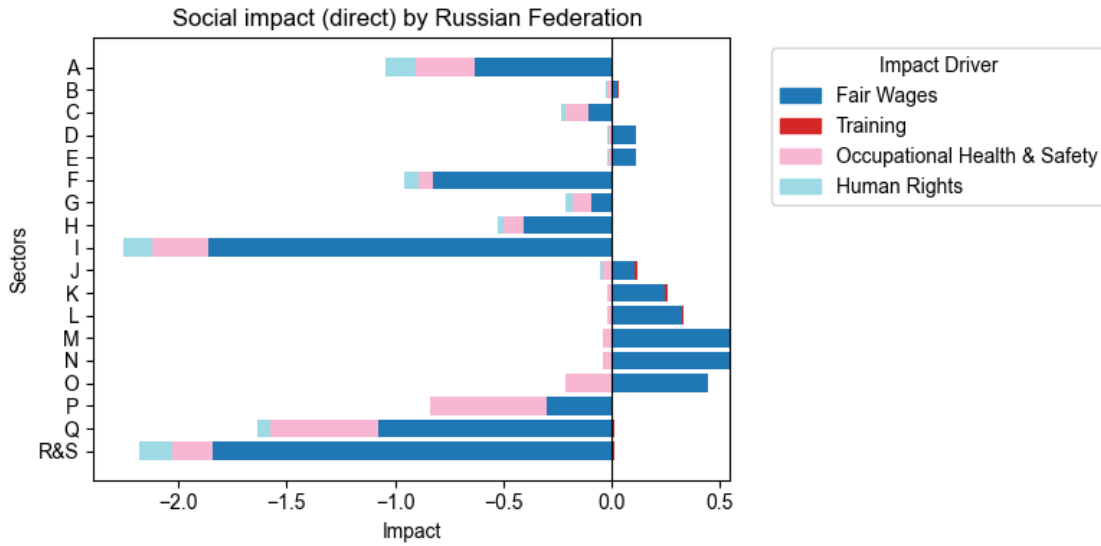
Social Impact RUS

Total



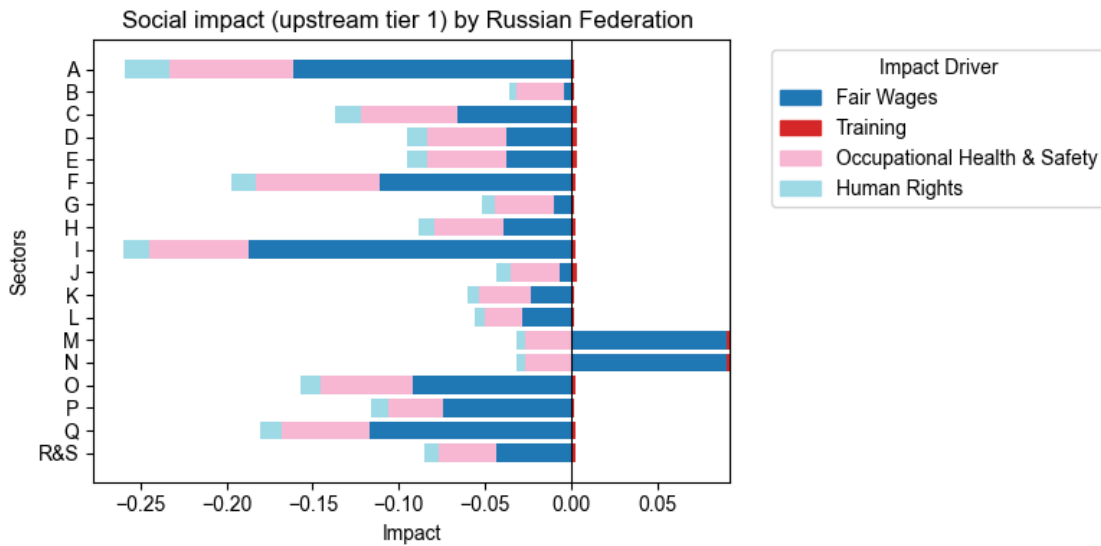
Source: VBA/WifOR, Overview of social impact, Total in Russian Federation, 2024, Calculated based on WifOR Institute, WifOR Value Factors, Version February 2025

direct



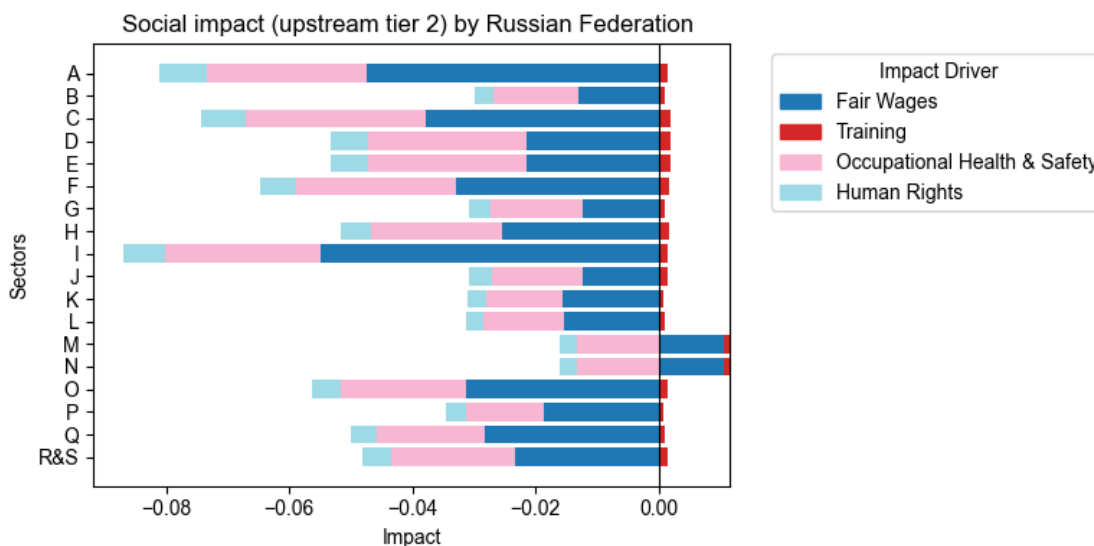
Source: VBA/WifOR, Overview of social impact, direct in Russian Federation, 2024, Calculated based on WifOR Institute, WifOR Value Factors, Version February 2025

upstream tier 1



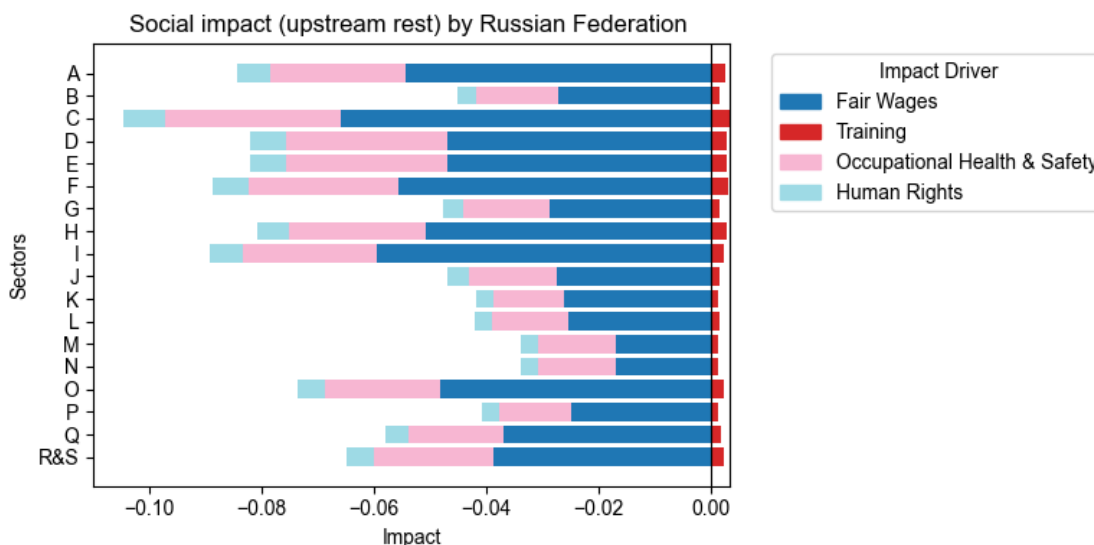
Source: VBA/WifOR, Overview of social impact, upstream tier 1 in Russian Federation, 2024, Calculated based on WifOR Institute, WifOR Value Factors, Version February 2025

upstream tier 2



Source: VBA/WifOR, Overview of social impact, upstream tier 2 in Russian Federation, 2024, Calculated based on WifOR Institute, WifOR Value Factors, Version February 2025

upstream rest



Source: VBA/WifOR, Overview of social impact, upstream rest in Russian Federation, 2024, Calculated based on WifOR Institute, WifOR Value Factors, Version February 2025

The impact intensities of environmental impacts across various NACE sectors in the Russian Federation, as assessed by the Value Balancing Alliance (VBA) and WifOR methodologies, highlight significant variations in both direct and upstream contributions to ecological

degradation. Direct impacts are often more substantial in sectors such as Agriculture and Manufacturing, indicating that these sectors have higher immediate environmental footprints, particularly in terms of air emissions and GHGs. In contrast, upstream impacts, especially in Tier 1 and Tier 2, tend to show a more distributed negative effect across sectors, suggesting that supply chain activities also play a critical role in environmental degradation. The methodologies emphasize the importance of considering both direct operations and upstream activities to fully understand the environmental impacts, as upstream activities can significantly contribute to the overall ecological footprint. This comprehensive approach underscores the need for targeted interventions across the entire value chain to mitigate environmental impacts effectively.

Application

Beyond comparing company and sector impacts, the data presented here can support various additional applications. This chapter highlights several such use cases.

Impact benchmarks can help state institutions assess risks, guide investments and funding strategies, inform procurement decisions, enforce compliance, and shape policies that promote human rights protection, environmental sustainability, and economic growth. By applying country-specific and industry-specific impact benchmarks, governments and regulatory bodies can reduce liabilities, such as pollution and labor exploitation, while ensuring fair competition.

Collection of ideas				
	Regulation & Compliance	Policy & Economic Planning	Investment & Development Finance	Risk Assessment
Institution	Ministries	Development Institutions	Development Banks	Insurance Entities
Vision of application	Benchmarks could support industry-specific sustainability target setting and provide valuable insights for cost-benefit analyses of regulations	Development institutions could use benchmarks to shape industry-specific sustainability goals like labour protection guidelines	Benchmarks could help guide funding decisions for large projects, ensuring proper risk mitigation, particularly in sectors such as agriculture	Insurers could assess risks using industry benchmarks, helping determine eligibility and pricing for political risk insurance
	Public Procurement & Infrastructure	International Trade & Market Access	Accountability & Consumer Protection	Supply Chain Management
Institution	Public-Private Partnerships	Trade Ministries	Consumer Protection Agencies	Export Credit Agencies
Vision of application	Governments could use country-specific impact benchmarks to compare and select private sector partners (e.g., Infrastructure projects)	Trade ministries could apply sustainability benchmarks to imported goods (e.g., carbon intensity benchmarks for minerals)	Transparency rules could be enforced, requiring companies to disclose their impacts relative to benchmarks to prevent false claims and ensure accountability	Export credit agencies could use environmental and social benchmarks in financing decisions to promote ethical and sustainable supply chains

Figure VBA, Policy Applications, 2025

Impact Intensities represent the average environmental, social, and economic impact per sector output across countries, regions, and globally. They serve as a reference point for assessing an organization’s sustainability performance in its own operations and supply chains across industries and geographies. By comparing their performance to sector averages, companies and other organizations can determine whether they meet or exceed benchmarks and set specific targets for improvement.¹⁰

¹⁰ VBA et al., Valuing Impact Materiality 2025, 2025, www.value-balancing.com.

Beyond internal assessments, Impact Intensities encourage collaboration with suppliers and partners, fostering sustainability improvements across shared supply chains. By identifying high-impact tiers or regions, companies can make informed decisions about production and sourcing. On a global scale, comparing benchmarks across countries highlights regions with critical sustainability challenges, enabling firms to focus efforts where they are most needed. These benchmarks also help organizations anticipate risks beyond production, such as regulatory pressures or resource availability constraints. By revealing industries and countries where unsustainable environmental or social challenges could lead to future restrictions, they support strategic decisions on production, sourcing, resource allocation, and diversification. Additionally, they help companies effectively communicate sustainability achievements across diverse markets.

The benchmarks serve as a key reference for materiality assessments, helping companies prioritize impacts, allocate resources efficiently, and align with stakeholder and sustainability goals. They provide reliable data for transparent reporting, enabling companies to demonstrate their performance to investors, customers, and other stakeholders. This fosters trust, ensures compliance with standards, and enhances corporate reputation.

As sustainability becomes increasingly important and disclosure regulations evolve, assessment and reporting methodologies must keep pace. Impact Intensity benchmarks offer valuable guidance for improving practices, refining sustainability reporting, sharpening decision-making, and optimizing resource allocation. It is important to note that Impact Intensities are monetized using WifOR value factors, and meaningful comparisons require companies to calculate their impacts using the same methodology.

To illustrate how these benchmarks can be applied in practice, consider the following example: In Australia's Consumer Goods sector, an increase of EUR 1000¹¹ in production results in an average negative impact of EUR 6.98 from greenhouse gas (GHG) emissions within a company's own operations. Direct suppliers contribute another EUR 16.04, while suppliers' suppliers account for EUR 10.20 globally, and the remaining global supply chain adds EUR 15.77. Altogether, the total damage due to GHG emissions across the entire value chain amounts to approximately EUR 49 per EUR 1000 of output. This indicates that the majority of GHG emissions are driven by the upstream supply chain rather than the direct operations of Consumer Goods companies.

A company operating in this sector in Australia can compare these Impact Intensity benchmarks with its own data to evaluate its performance. To calculate its own GHG Impact Intensities, the company must take its environmental data per country and value chain stage, divide it by its output or turnover (own operations in the respective country), and multiply the result with the WifOR value factor:

¹¹ For ease of interpretation, the numbers in this example are scaled up by 1000. The tables show impact per EUR 1 of output.

$$GHG\ Intensity_{c,v} = \frac{GHG\ emissions_{c,v}}{Output_c} * WifOR\ value\ factor\ for\ GHG\ emissions^{12}$$

If the company's calculated GHG Intensity values are lower than the benchmark, this indicates a smaller GHG footprint relative to the sector average. Conversely, higher values suggest a larger-than-average impact.

For a materiality assessment, Impact Intensities at or above the sectoral benchmark can be considered material, signaling areas that may require targeted sustainability measures.

Caveats

Data Accuracy

The input-output model used to calculate the Impact Intensities integrates satellite accounts for various indicators, constructed using multiple data sources. These accounts aim to accurately portray industry effects across all countries based on the best available knowledge and data.¹³ However, varying data availability across indicators, countries, and sectors necessitates certain extrapolations and assumptions. WifOR is committed to continuously updating its data to improve accuracy and minimize errors or gaps. As such, the results here represent a snapshot, capturing current impacts as comprehensively as possible. Despite inherent limitations, this dataset remains, to the best of our knowledge, the most detailed, granular, and comprehensive source available for assessing industrial impacts.

Impact Valuation

Impact Valuation advances traditional reporting beyond disclosure of companies' social and environmental effects in disparate units (e.g., GHG emissions in metric tons or occupational accidents in numbers of events). It captures the environmental and social changes caused by these outputs, tracks their broader impact on society, and conveys these effects in monetary terms—a unified metric that enables comparison across a diverse range of indicators.

Various approaches exist to quantify the societal value of indicators. In the present assessment, the indicators were monetized using the WifOR Impact Valuation methodology, with publicly available value factors. WifOR primarily focuses on damage costs to measure impacts. However, this is not feasible for all indicators, as some impact pathways and their consequences remain insufficiently understood. Each indicator therefore follows a specific valuation approach. For example, GHG emissions contribute to climate change regardless of their source and are thus valued using a 'social cost of carbon' approach and a global value factor. By contrast, water consumption is assessed based on economic damage and human

¹² c = country of operation; v = value chain level

¹³ Scholz, Richard; Dorndorf, Tabea; Tesch, Jasmin; Köster, Robert; Croner, Daniel; Kalamov, Zarko; Setzer, Jana. 2024. Impact measurement using WifOR's sustainability footprint method. Methodological report. 2024 WifOR Institute.

health impacts, yielding country-specific value factors that reflect local water scarcity. This means water consumption in highly water-stressed regions will generate a disproportionately higher impact, in some cases exceeding that of GHG emissions at global level. Given such methodological idiosyncrasies, comparisons between indicators should be interpreted cautiously, as differing valuation approaches limit direct comparability, especially on a worldwide level.

Double Counting

Impact Valuation carries the risk of *double counting*, as different impact drivers may share the same, or overlapping, impact pathways. This challenge is particularly relevant when analyzing multiple indicators together. For instance, waste incineration releases air pollutants that contribute to respiratory disease and health-related costs—accounted for in the value factor for *Waste*, but also included in the factor for *Air Emission*. Simply subtracting this impact from the waste coefficient would underestimate the true impact of waste, while summing both indicators would lead to double counting.

Economic Impact

Gross Value Added (GVA) is a key metric for assessing a company's economic contribution across value chains. It represents the economic value generated through company operations after deducting the cost of inputs and services used in production. Often, the total GVA across the entire value chain approximately matches the direct output of a company—if a company generates EUR 1,000 in direct output, the total GVA across its supply chain and internal operations typically also equals EUR 1,000. This equivalence is down to the fact that GVA encompasses all value-creation activities, from raw materials production to final goods and services, and is therefore distributed across all stages of the value chain. The distribution varies by industry and location: manufacturing or heavy engineering often rely on extensive supplier networks, resulting in significant upstream GVA contributions, while software development or advanced technology focus on highly integrated operations and tend to generate a substantial proportion of GVA internally.

Netting Impacts

Impact Valuation seeks to enhance transparency, an aim that cannot be achieved if results are overly aggregated. Expressing diverse impacts using a common monetary metric does reduce complexity, but it also risks obscuring critical nuances. And while simplification can be useful, it should not carry the implication that negative impacts can be offset by positive ones.

There are certain cases where netting impacts can be appropriate (e.g., aggregating an indicator across different locations). But practices such as netting across different indicators can lead to *greenwashing* and a misrepresentation of results. This risk is particularly relevant for economic impact (represented by GVA), which has therefore been intentionally excluded from the charts below.

In the current phase of Impact Valuation development, limitations remain, including overlapping indicators (double counting), divergent valuation approaches, and data gaps that hinder a fully comprehensive assessment. Moreover, different impacts affect different groups unevenly, meaning that a positive impact on one group does not necessarily compensate for a negative impact on another (for instance, extra vocational training for managers cannot offset agricultural losses caused by water scarcity).



Visit us at <http://www.value-balancing.com>
Contact us at info@value-balancing.com

Value Balancing Alliance e.V.
Bockenheimer Landstraße 22
60323 Frankfurt am Main, Germany
Phone: +49 (0)69 153 29 36 - 10